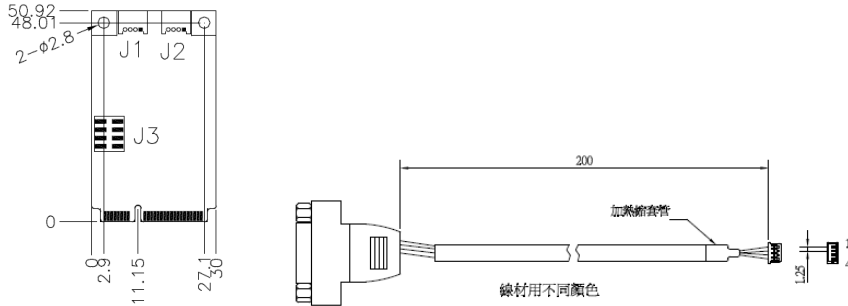


# IBD189 CAN BUS CARD PCI Express Mini Card V1.2

User guide 1.0

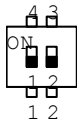
## IBD189 and PK1-79 Mechanical Drawing



IBD 189 x 1 and PK1-79 x 2

## Setting the Jumpers

### SW1: Programmable Firmware Upgrade Setting



**Default: Normal Mode, Pin 1,2 OFF**

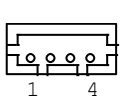
SW1-1P	SW1-2P	F/W Upgrade Mode
OFF	OFF	Normal Mode*
ON	OFF	DFU Mode

\*Default

## Connectors pin definition

### CAN1, CAN2: CAN BUS Connector

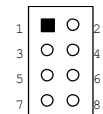
1X4\_1.25mm\_Right Angle\_Male\_Wafer (E-CALL 0110-2620040, Mating connector: Molex 53048-0410)



Pin #	Signal Name
1	DATA H
2	Ground
3	DATA L
4	Ground

### J3: JTAG (factory use only)

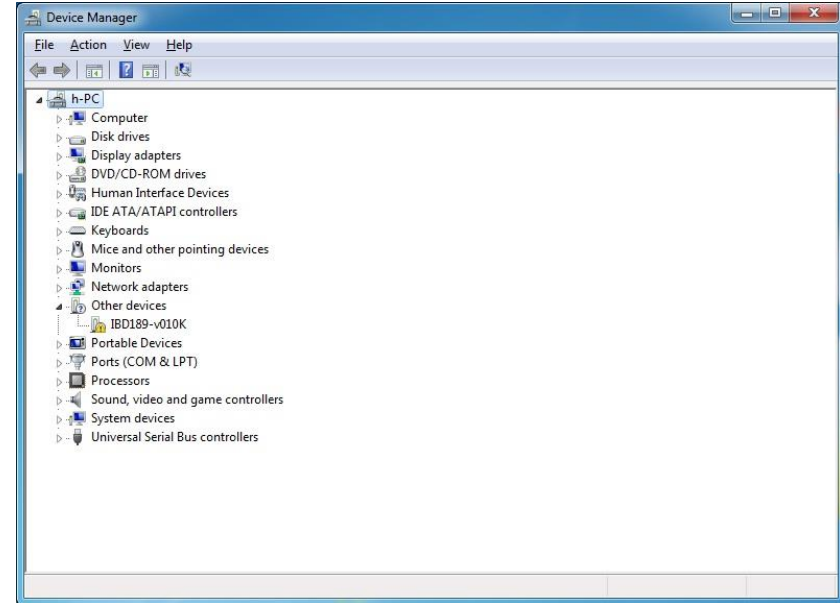
2X4\_2.0mm\_Straight\_Male\_Pin Header (E-CALL 0196-01-251-080)



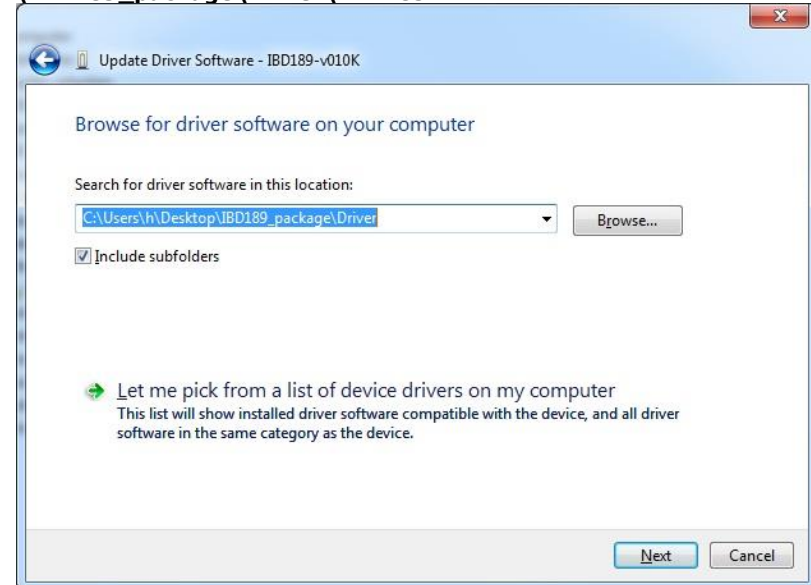
Signal Name	Pin #	Pin #	Signal Name
+3.3V	1	2	GND
TRST	3	4	TCLK
TDI	5	6	TDO
TMS	7	8	Reset

## Mini PCI-E CAN Bus Card Driver Installation

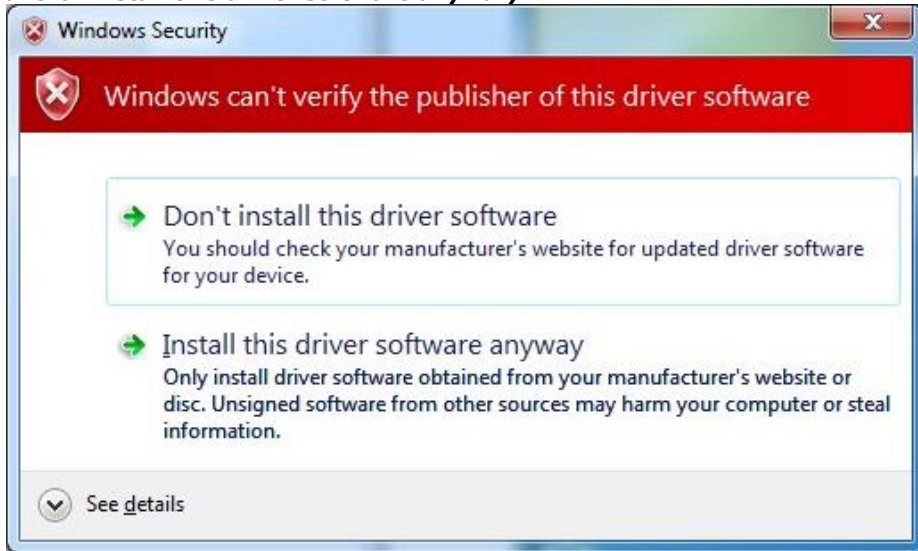
1. In the Windows OS, go to the Computer Management screen. In the 'Other devices' as shown, right click the "PCI Serial Port" Properties.



2. In the PCI Serial Port Properties screen, click **Update Driver**.
3. In the Hardware Update Wizard screen, select "No, not this time" and click **Next** to continue.
4. Select "Install from a list or specific location (Advanced)", and click **Next** to continue.
5. Choose "search" and "installation" options, click the checkbox of "Include this location in the search", and click **Browse** to find the driver's path in the CD provided or enter the path directly - **\\IBD189\_package\Driver\IBD189.inf**



6. Click **Install this driver software anyway**.



7. Click **Finish** to close the wizard.

8. There are four serial ports. Therefore, the Hardware Update Wizard procedure will be repeated for the other serial port.